

Government Degree College Kaffota
District Sirmaur, Himachal Pradesh
Ranking of Government Colleges in HP

Criterion 3 Infrastructure & Resources

Key Indicator 3.7 Laboratories with adequate equipment



Table of Contents

3. STUDENT SUPPORT, SERVICES AND PROGRESSION INFRASTRUCTURE & RESOURCES	1
3.7. Laboratories	1
3.7.1. Laboratories with adequate equipment according to syllabi.....	1
Response: Yes.....	1
3.7.2. Usage of available Lab infrastructure	1
Response: Yes.....	1
i. Music Lab	2
ii. Commerce Lab.....	18

Table of Figures

Figure 1: Prof. Vipin Singh With Sitar	2
Figure 2: Dhol	3
Figure 3: Music Room Outside	4
Figure 4: Music Room Inside	5
Figure 5: Hudhak	6
Figure 6: Lota.....	7
Figure 7: Parat	8
Figure 8: Sitar with Students	9
Figure 9: Harmonium	10
Figure 10: Sitar	11
Figure 11: Speaker	12
Figure 12: Ransingha.....	13
Figure 13: Khanjari	14
Figure 14: Dholak.....	15
Figure 15: Tasha	16
Figure 16: Mic with Remote.....	17
Figure 17: Lab Outside	18
Figure 18: Lab Inside	19

RANKING FRAMEWORK

3. STUDENT SUPPORT, SERVICES AND PROGRESSION INFRASTRUCTURE & RESOURCES

3.7. Laboratories

3.7.1. Laboratories with adequate equipment according to syllabi

Response: Yes

Government Degree College Kaffota maintains laboratories for both **Music and Commerce departments**. Given the relatively low student enrolment in these departments, the existing lab facilities and resources are sufficient to meet the academic needs of these students. The equipment provided is aligned with the syllabus requirements, ensuring that students have access to the necessary tools for practical learning and hands-on experience.

3.7.2. Usage of available Lab infrastructure

Response: Yes

The available lab infrastructure is utilized as per the course curriculum requirements. Practical sessions are scheduled to ensure optimal use of the lab resources, allowing students to apply theoretical knowledge through experiential learning. This approach reinforces students' understanding of course content, providing them with valuable skills applicable to their respective fields.

Through these initiatives, Government Degree College Kaffota effectively supports practical learning, ensuring that students benefit from a well-equipped, syllabus-compliant lab environment.

i. Music Lab



Figure 1: Prof. Vipin Singh With Sitar



Figure 2: Dhol

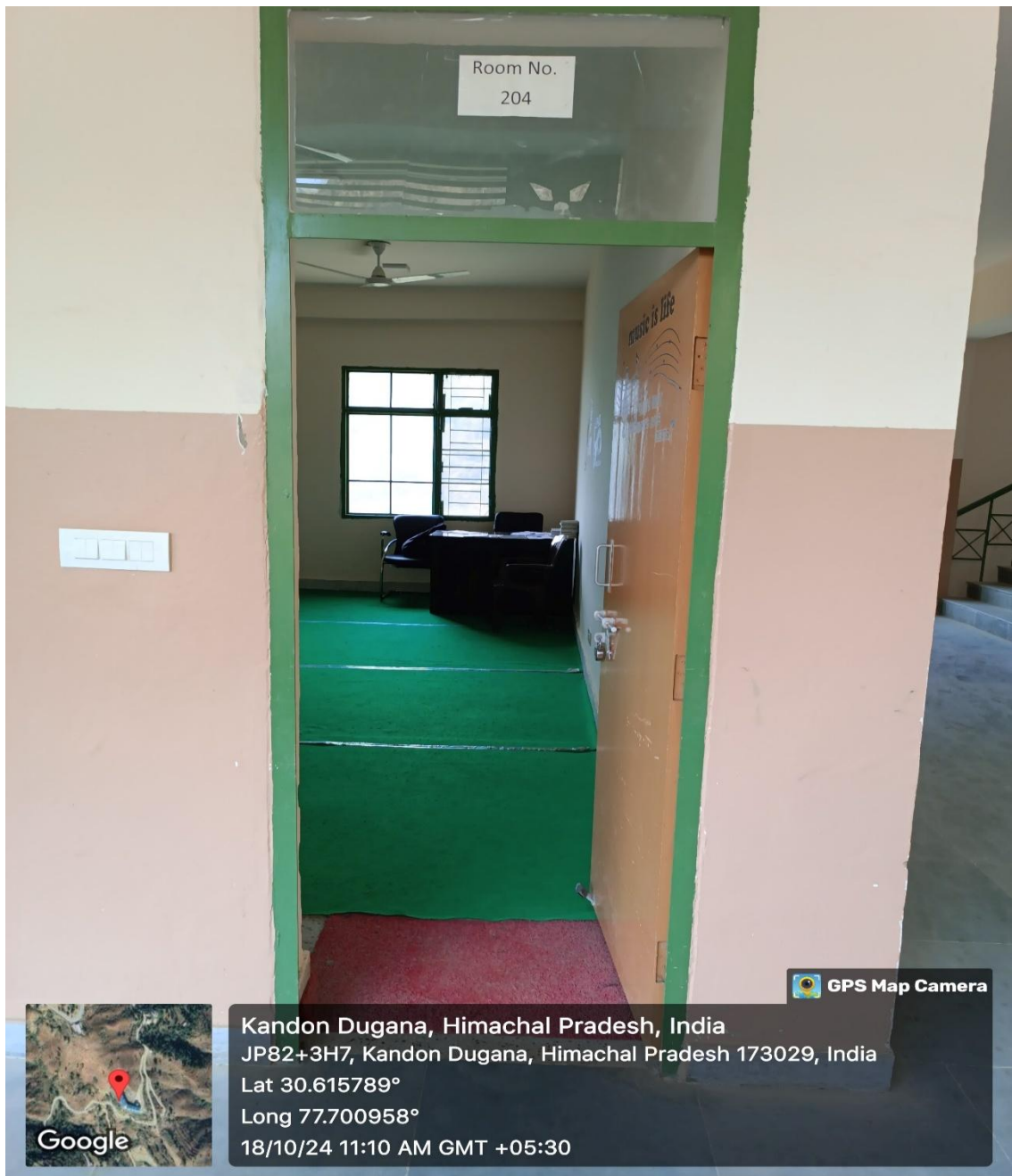


Figure 3: Music Room Outside

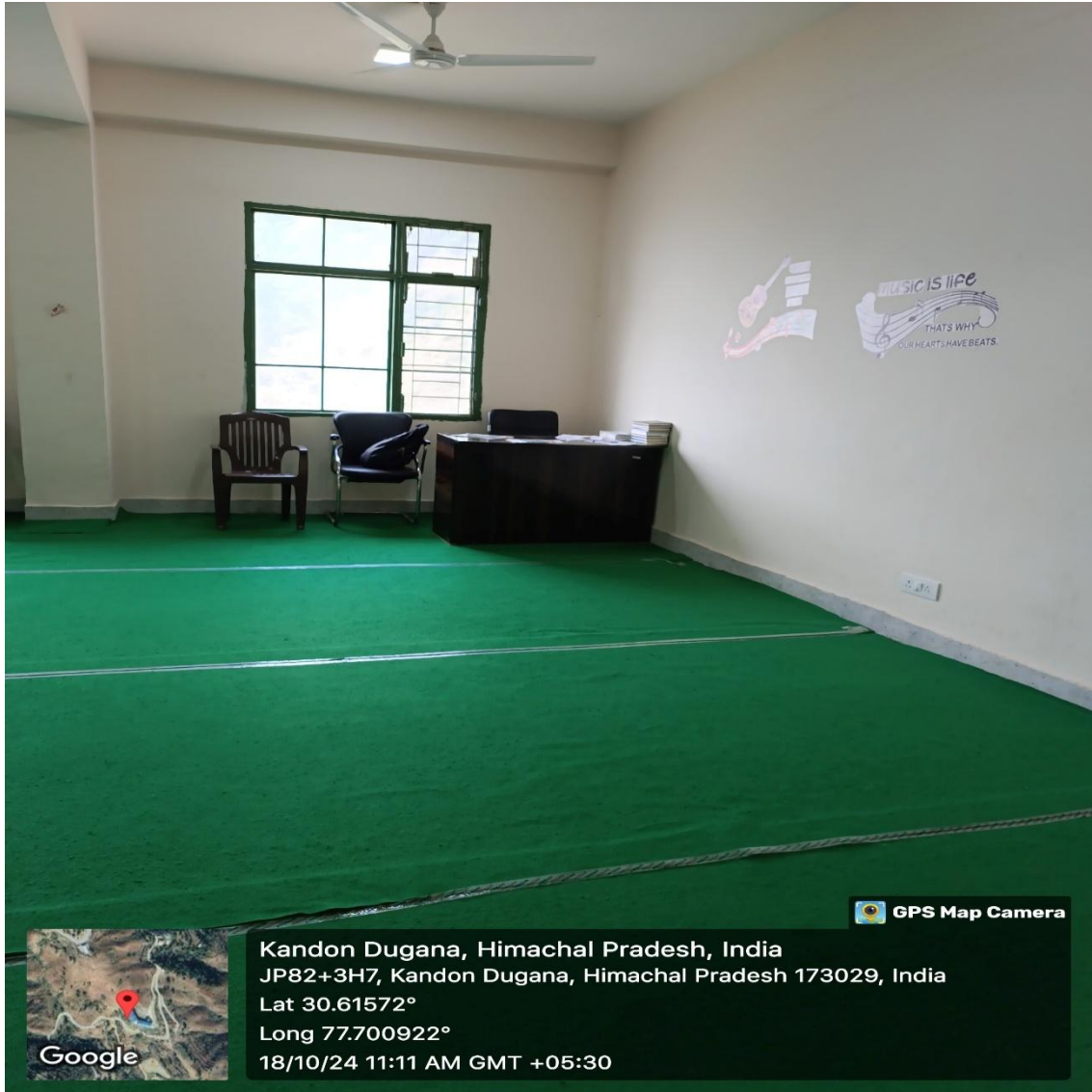


Figure 4: Music Room Inside



Figure 5: Hudhak



Figure 6: Lota

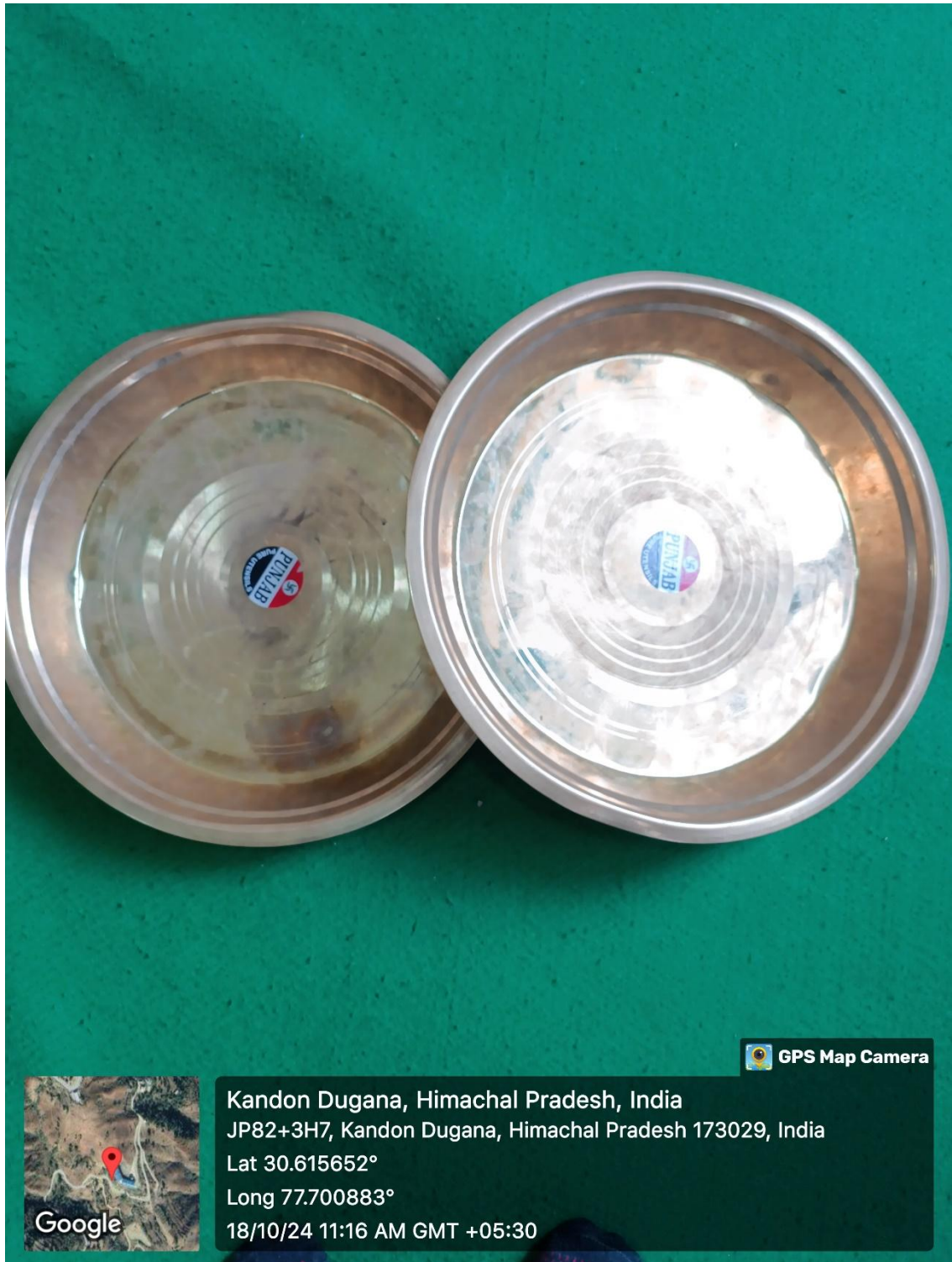


Figure 7: Parat



Figure 8: Sitar with Students



Figure 9: Harmonium



Figure 10: Sitar



Figure 11: Speaker

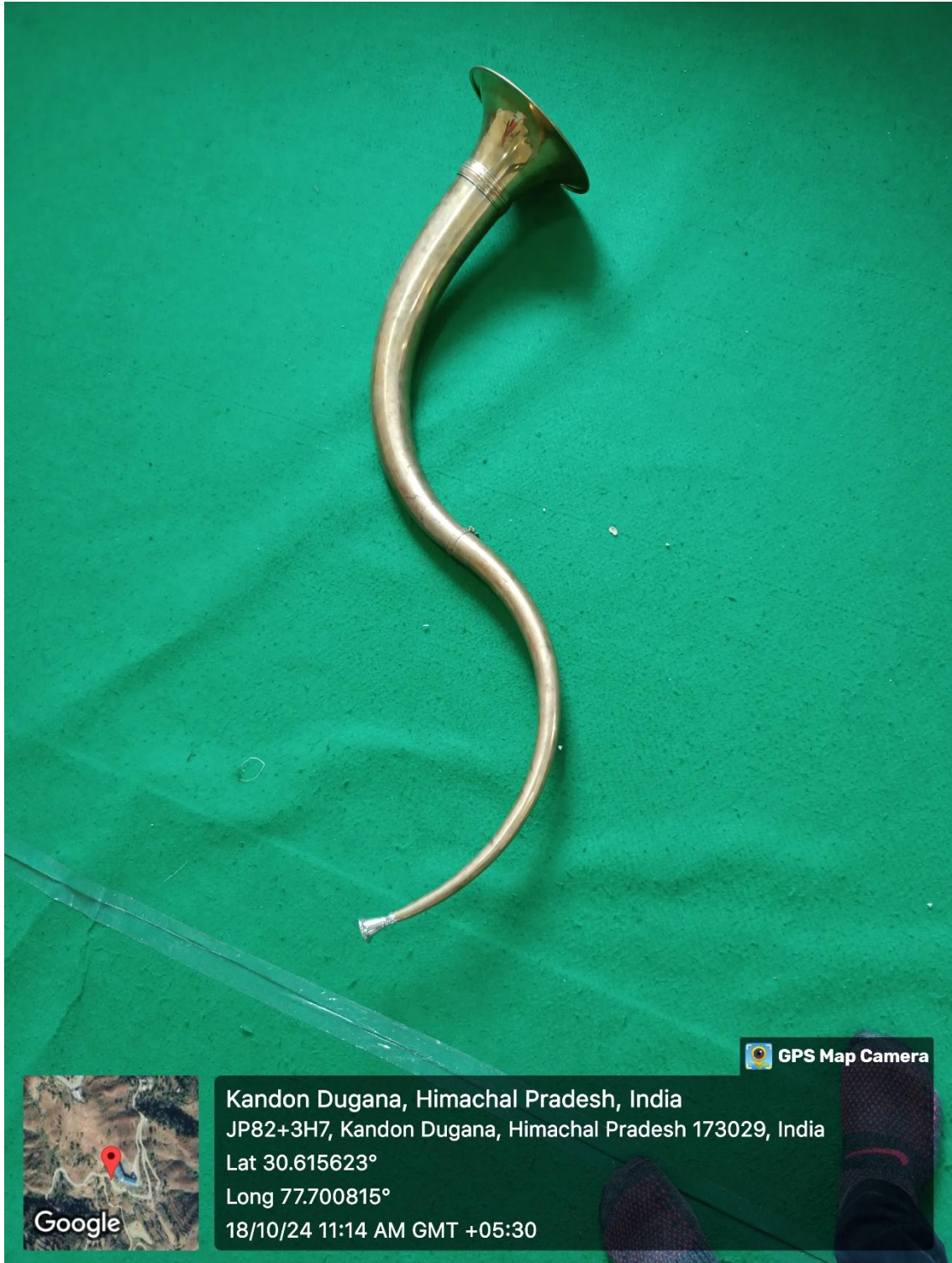


Figure 12: Ransingha



Figure 13: Khanjari



Figure 14: Dholak



Figure 15: Tasha

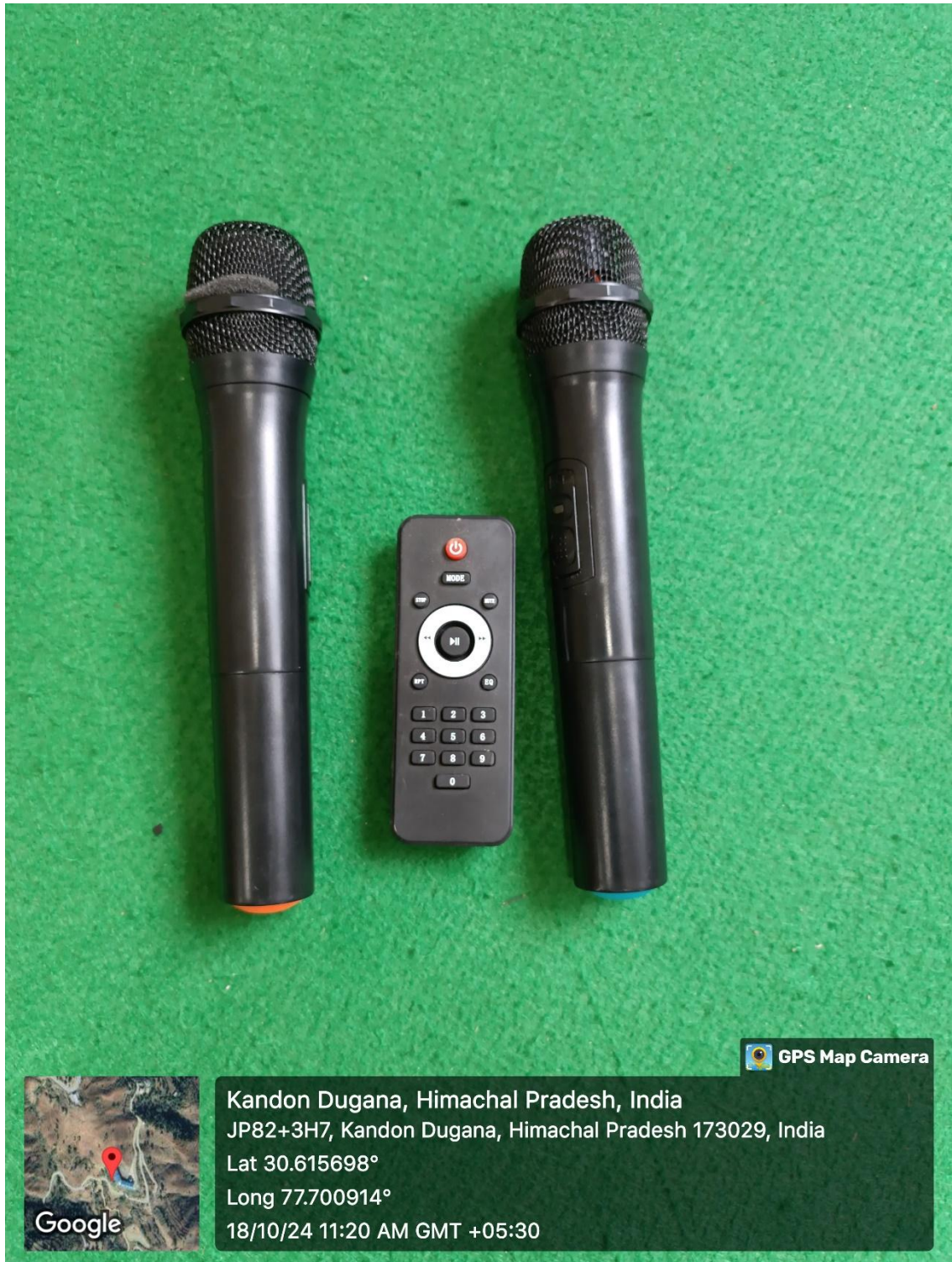


Figure 16: Mic with Remote

ii. Commerce Lab



Figure 17: Lab Outside



Figure 18: Lab Inside